



Cdc25C (phospho Ser216) Polyclonal Antibody

Catalog No	YP-Ab-16585
Isotype	IgG
Reactivity	Human;Rat;Mouse;
Applications	WB;IHC;IF;ELISA
Gene Name	CDC25C
Protein Name	M-phase inducer phosphatase 3
Immunogen	The antiserum was produced against synthesized peptide derived from human CDC25C around the phosphorylation site of Ser216. AA range:183-232
Specificity	Phospho-Cdc25C (S216) Polyclonal Antibody detects endogenous levels of Cdc25C protein only when phosphorylated at S216.
Formulation	Liquid in PBS containing 50% glycerol, 0.5% BSA and 0.02% sodium azide.
Source	Polyclonal, Rabbit,IgG
Purification	The antibody was affinity-purified from rabbit antiserum by affinity-chromatography using epitope-specific immunogen.
Dilution	WB: 1/500 - 1/2000. IHC: 1/100 - 1/300. ELISA: 1/10000.. IF 1:50-200
Concentration	1 mg/ml
Purity	≥90%
Storage Stability	-20°C/1 year
Synonyms	CDC25C; M-phase inducer phosphatase 3; Dual specificity phosphatase Cdc25C
Observed Band	53kD
Cell Pathway	Nucleus .
Tissue Specificity	Colon carcinoma,Epithelium,Skin,Testis,
Function	catalytic activity:Protein tyrosine phosphate + H(2)O = protein tyrosine + phosphate.,developmental stage:Expressed predominantly in G2 phase.,function:Functions as a dosage-dependent inducer in mitotic control. It is a tyrosine protein phosphatase required for progression of the cell cycle. It directly dephosphorylates CDC2 and activate its kinase activity.,PTM:Phosphorylated by CHK1 on Ser-216. This phosphorylation creates a binding site for 14-3-3 protein and inhibits the phosphatase.,similarity:Belongs to the MPI phosphatase family.,similarity:Contains 1 rhodanese domain.,subunit:Interacts with HIV-1 Vpr, thereby inactivating CDC25C phosphatase activity.,
Background	cell division cycle 25C(CDC25C) Homo sapiens This gene encodes a conserved protein that plays a key role in the regulation of cell division. The encoded protein directs dephosphorylation of cyclin B-bound CDC2 and triggers entry into mitosis. It also suppresses p53-induced growth arrest. Multiple alternatively spliced transcript variants of this gene have been described.



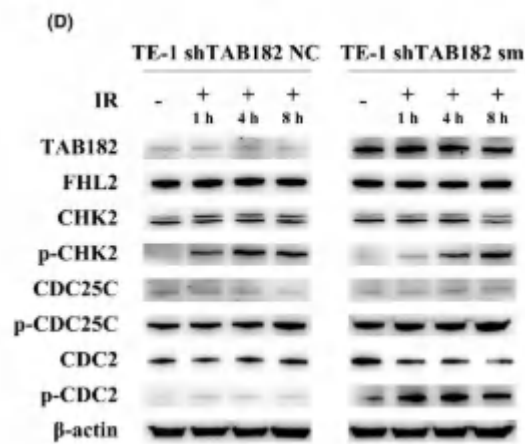
[provided by RefSeq, Dec 2015],

matters needing attention

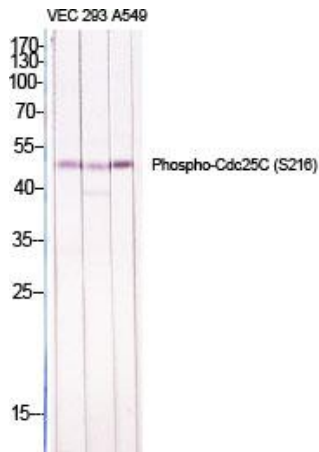
Avoid repeated freezing and thawing!

Usage suggestions

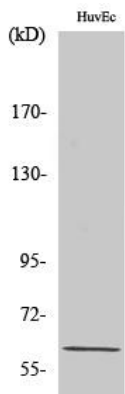
This product can be used in immunological reaction related experiments. For more information, please consult technical personnel.

Products Images


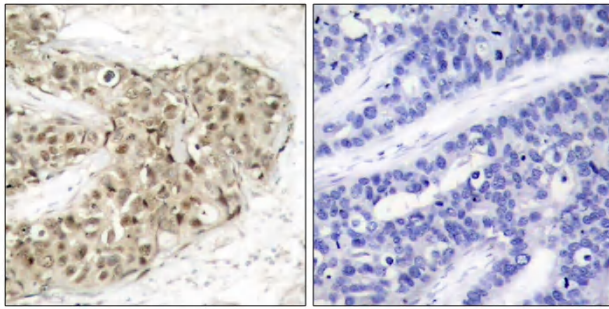
Cao, Yuandong, et al. "Elevated TAB182 enhances the radioresistance of esophageal squamous cell carcinoma through G2-M checkpoint modulation." *Cancer Medicine* 10.9 (2021): 3101-3112.



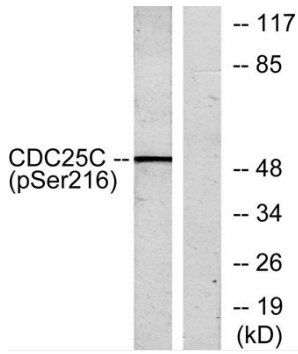
Western Blot analysis of various cells using Phospho-Cdc25C (S216) Polyclonal Antibody diluted at 1:1000



Western Blot analysis of HuvEc cells using Phospho-Cdc25C (S216) Polyclonal Antibody diluted at 1:1000



Immunohistochemistry analysis of paraffin-embedded human breast carcinoma, using CDC25C (Phospho-Ser216) Antibody. The picture on the right is blocked with the phospho peptide.



Western blot analysis of lysates from HUVEC cells treated with serum 20% 30', using CDC25C (Phospho-Ser216) Antibody. The lane on the right is blocked with the phospho peptide.